

Modular office construction

Grevenmacher, LU



Project details

Client	Blumer-Lehmann Sàrl, Wasserbillig, LU
Architecture	FAT Architects
Project type	Office and administration
Construction type	Modular construction
Services	General contractor services (GC)
Construction	2019
Locality	Grevenmacher
Country	Luxembourg

From a mountain restaurant to an architectural office

This project is proof of just how versatile modular construction is: once positioned side by side, the timber room modules formed a restaurant where winter sports enthusiasts on the Chäserrugg mountain could rest for a while. Now stacked on top of one another, some of the modules are providing the planners at FAT Architects in Luxembourg with a modern working space.

When our company built the top station on the Chäserrugg mountain according to Herzog & de Meuron's plans, we created a makeshift restaurant made of timber modules for the construction phase. Three of these modules, which were put into interim storage on our premises once construction was complete, attracted the interest of FAT Architects (our partner in the Dübendorf Innovation Park project) and ultimately led to the idea of FAT Architects using them to create a timber and modular construction flagship project – their own office building.

FAT Architects stacked the shell structures (including the windows) on point foundations so that the conversion would only require minimal time and effort. A few additional interior walls, perforated three-layer boards for the ceiling cladding, a staircase and horizontal rhomboid facade battens were all that was needed to create a small yet sophisticated modular office offering 80 m² of floor space over two floors. The structure houses a 30 m² office, a 15 m² meeting room and a 7 m² kitchen; another 4.5 m² of floor space is used for the entrance area, toilet and shower. Heat is provided by electric radiators and hot water by a small boiler.

Specific Contact



Frank Stolz

Division Manager | Timber Engineering
Consultant | Timber and Modular
Construction | Luxembourg
Luxembourg
Luxembourg Location Manager

T +352 2880454-11
frank.stolz@blumer-lehmann.com

Modular office construction

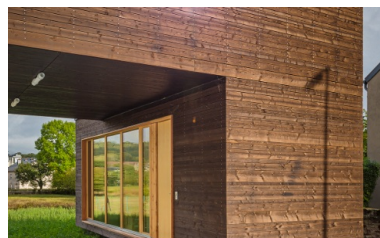
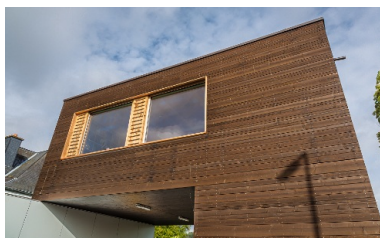
Grevenmacher, LU



The simple interior design with visible timber gives the building a modern feel.



A pleasant timber interior design with modern highlights.



The timber room modules – testament to the builders' combination and cladding skills – create a small, smart office building.

The bright highlights on the dark timber facade and the building's simple lines go together perfectly.

Modular office construction

Grevenmacher, LU



Vier Arbeitsplätze finden Platz im Büro des Modulbaus.